

A Few Thoughts from the Handbook on the Praesidium Setting

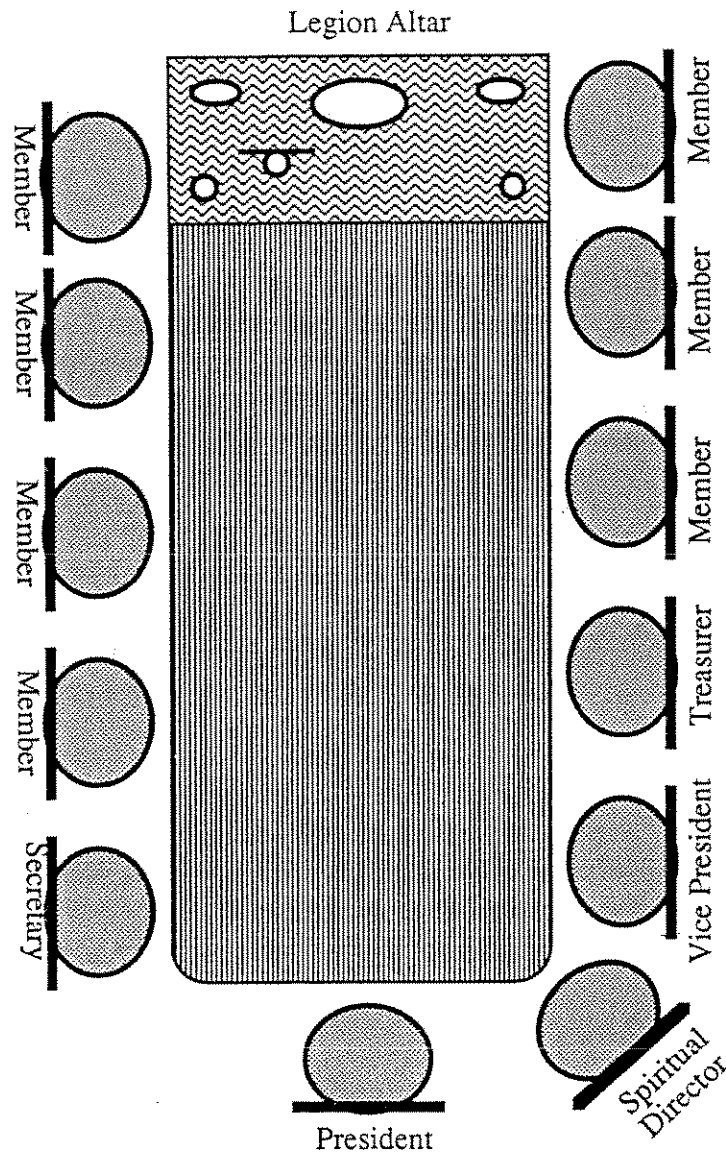
Page 146: "With Jesus in that little Legion family are His Mother and St. Joseph, who have towards the Praesidium the same relation that they had to Him; which permits us to look upon the Praesidium as a projection of the Home of Nazareth, and this is not as a mere devotional exercise but as something based on reality... Likewise we may piously identify the premises and equipment of the praesidium with the fabric and the furniture of the Holy House..."

Page 188, No. 5: "The room should be well-lighted and of comfortable temperature. Defects in this direction will convert to a penance the meetings that should be a pleasure, and will prejudice fatally the prospects of the Praesidium."

Page 188, No. 6: "Chairs or at least benches should be provided for seating purposes. If the members are scattered around on school-desks or on other improvised seating-accommodation, an air of disorder will be created, in which the Legion spirit, which is a spirit of order, will not thrive."

Page 147: "In its own fashion everything about the Praesidium plays its part in moulding the member and therefore should reflect those characteristics of the Holy Home, just as the Legionaries themselves should reflect Jesus and Mary."

Page 195: "...A Praesidium places at her disposal a group of loving souls eager to help her in that office. It is certain that she will accept that aid. Therefore a Praesidium may be imagined as a sort of local presence of Mary through which she will display her unique gifts and reproduce her motherhood. So it can be expected that a Praesidium which is true to its ideals will bestow around itself life and renewal and healing and solutions. Places with problems should apply this spiritual principle."



This is an example of a working praesidium within the Curia. The officers and members are arranged in a "family style setting." The Spiritual Director ranks as an officer of the Praesidium, and shall uphold all due Legionary authority" (page. 64). The Spiritual Director's chair is set on the corner of the table which denotes both a position of honor and authority. Officers are arranged at the opposite end of the table from the altar. This setting is propagated by local tradition and uniformity. For further information on the setting of the Praesidium please refer to pages 69, 146, 178, and 188 in the Handbook.